

# SONGLE RELAY

	RELAY ISO9002	<b>SLA</b>
---	---------------	------------



## 1. MAIN FEATURES

- Up to 30A switching in SPST and 20A switching in spot arrangements.
- Available as an open-frame relay, with a snap-on dust cover or with an immersion cleanable, plastic sealed case.

## 2. APPLICATIONS

- Used for power switching, Electrical Heater, ventilator, Air conditioning, Refrigerating, Automobile and House-hold Appliance.

## 3. ORDERING INFORMATION

SLA	XX VDC	S	L	C
Model of relay	Nominal coil voltage	Structure	Coil sensitivity	Contact form
SLA	05, 06, 09, 12, 18, 24, 48, 110VDC	S:Sealed type	L:0.93W	A:1 form A
		F:Flux free type	D:Special	B:1 form B C:1 form C

## 4. RATING

20A/30VDC 250VAC 30A/30VDC 250VAC

CCC FILE NUMBER: CQC03001003728 30A/250VDC

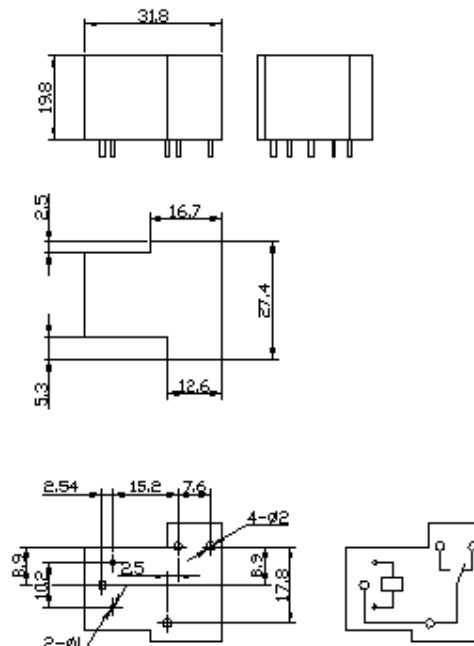
UL/CUL FILE NUMBER: E179944 NO:20A/240VAC 28VDC NC:10A/240VAC 28VDC

TUV FILE NUMBER: R50056114 NO:30A/250VAC 30VDC NC:20A/250VAC 30VDC

## 5. DIMENSION (unit:mm)

## DRILLING (unit:mm)

## WIRING DIAGRAM



## 6. COIL DATA CHART (AT20°C)

Coil Sensitivity	Coil Voltage Code	Nominal Voltage (VDC)	Nominal Current (mA)	Coil Resistance ( $\Omega$ ) $\pm 10\%$	Power Consumption (W)	Pull-In Voltage (VDC)	Drop-Out Voltage (VDC)	Max-Allowable Voltage (VDC)
SLA	05	5	185	27	abt. 0.93W	75% Max.	10% Max.	120%Max.
	06	6	150	40				
	09	9	93	97				
	12	12	77	155				
	15	15	59	256				
	18	18	47	380				
	24	24	36	660				
	48	48	20	2480				
	110	110	9	13000				

## 7. CONTACT RATING

Item \ Type	SLA			
	FORM A	FORM B	FORM C	
			N/O	N/C
Resistive Load ( $\cos\Phi=1$ )	30A 250VAC 30A 30VDC	15A 250VAC 10A 30VDC	20A 250VAC 20A 30VDC	10A 250VAC 10A 30VDC
General Motor	250VAC 2HP 120VAC 1HP	250VAC 0.5HP 120VAC 0.25HP	250VAC 2HP 120VAC 1HP	250VAC 0.5HP 120VAC 0.25HP
Ballast	10A 277VAC	3A 277VAC	10A 277VAC	3A 277VAC
LRA/FLA	250VAC 80/30	250VAC 30/10	250VAC 50/20	250VAC 20/7

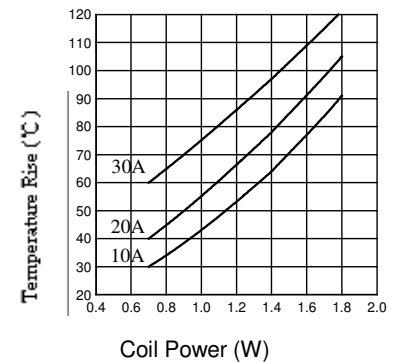
## 8. PERFORMANCE (at initial value)

Item \ Type	SLA
Contact Resistance	100m $\Omega$ Max.
Operation Time	15msec Max.
Release Time	10msec Max.
Dielectric Strength Between coil & contact Between contacts	2000VAC 1500VAC
Insulation Resistance	100 M $\Omega$ Min. (500VDC)
Max. ON/OFF Switching Mechanically Electrically	300 operation/min 30 operation/min
Operating Ambient Temperature	-40° to +85°C (storage)
Operating Humidity	45 to 85% RH
Coil Temperature Rise	60 deg. Max.
Vibration Endurance Error Operation	10 to 55Hz Double Amplitude 1.5mm 10 to 55Hz Double Amplitude 1.5mm
Shock Endurance Error Operation	100 m/sec <sup>2</sup> (abt. 100g's) 10 m/sec <sup>2</sup> (abt. 10g's)
Life Expectancy Mechanically Electrically	10 <sup>7</sup> 10 <sup>5</sup>
Weight	abt. 20grs, 24grs(SEALED)
UL File No.	E179944

## 9. REFERENCE DATA

OPEN-STYLE RELAY,

NO DUST COVER



SEALED RELAY

